

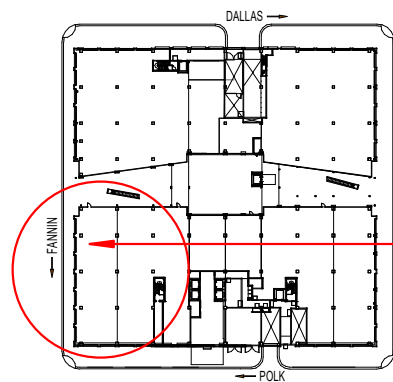
FANNIN

**131
RETAIL
5,842 SF**

**TOWER
LOBBY**

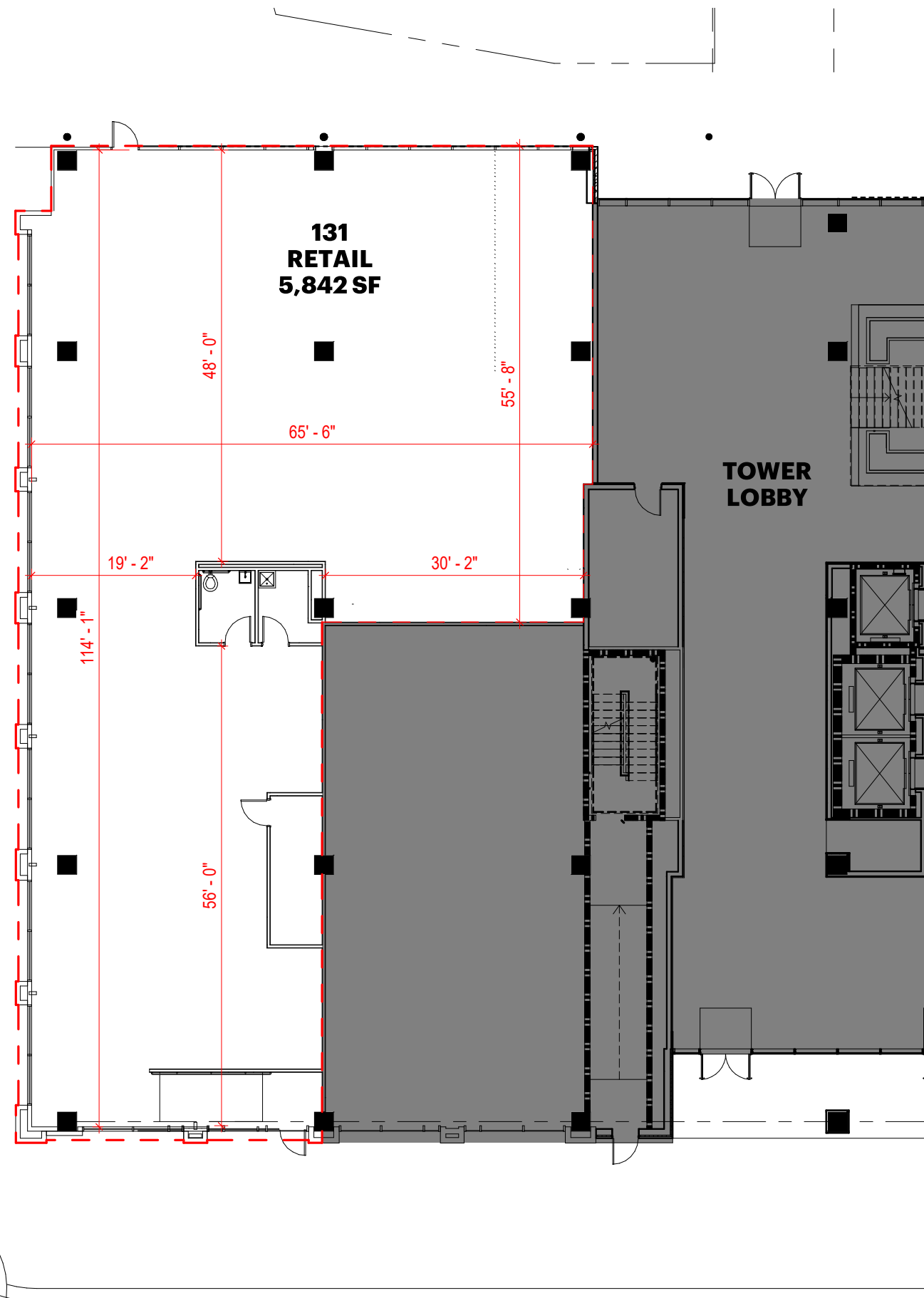
POLK

KEY PLAN



LEASE SPACE

Except as expressly provided in a lease agreement, This plan, drawing, or exhibit is for information purposes only and intended only as a general description of improvements which constitute a part of the retail complex of the development. Specific names, locations, dimensions of any stores, entrances, or improvements are subject to change, modification, alteration and deletion by landlord or other parties and are not a representation or warranty as to the opening or continued operation of any store named or depicted on any plan, drawing, or exhibits. Landlord reserves the right to change the number and location of building, building dimensions, the number of floors in any of the buildings, store dimensions and location, and the identity and type of other tenancies and occupancies. Area calculations are for approximation purposes and should be verified by tenant or tenant's agent prior to finalizing lease.



Retail
Suite 131 - 5,842 SF
1/16" = 1'-0"

